

[For Immediate Release]

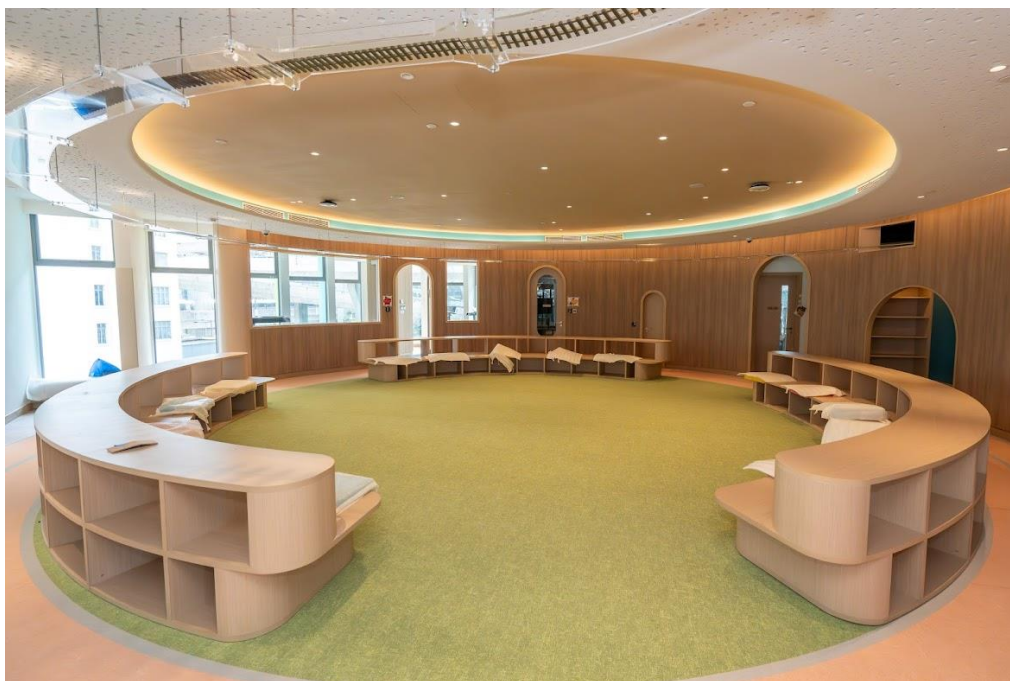
## HGC Delivers One-stop ICT Solutions to RMHC Hong Kong's Kwun Tong House

*Connecting children who are in need with the world by building a seamless and secure network environment*

**Hong Kong, 23 November, 2023** — HGC Global Communications Limited (HGC), a fully-fledged Information and Communications Technology (ICT) service provider and network operator with extensive global coverage, is pleased to announce that the company is leveraging its expertise in ICT to provide one-stop solutions to RMHC Hong Kong's newly launched Ronald McDonald House (RMH) in Kwun Tong, empowering sick children in the House to stay closely connected with their kin and rest of the outside world.

RMHC Hong Kong, as a major non-profit organisation in Hong Kong providing “family-centered care” support to seriously ill children and their families, established the second RMH program in Hong Kong in November this year. Located in Kwun Tong, the House is in close proximity to Hong Kong Children's Hospital to contribute to the provision of “family-centered care” by offering compassionate support and services to the families of sick children receiving treatment.

The new RMH is committed to improving the living quality of sick children and their families by adopting innovative technologies. HGC understood the importance of getting connected to digital world in these days, especially for sick children who are temporary isolated from the outside world, wi-fi connection is even more crucial as bridging them to the digital world. In addition, building a seamless and secure network environment could also facilitate parents to work remotely while taking care of their children in the House, creating more quality time for the families to stay together.



In view of this, HGC is collaborating with HPE Aruba Networking, the leading provider of next-generation network access solutions, to provide the best-in-class ICT solutions to the Kwun Tong RMH. In addition to offering a stable and rapid wi-fi connection to ensure seamless communications inside and outside of the house, HGC and HPE Aruba Networking also leverage their cybersecurity expertise to build a highly secure network, so as to provide peace of mind to both RMHC and every user in the house. Furthermore, HGC is also supporting the internal communications and equipment of the Kwun Tong RMH, fostering diverse interactions between the staff, parents and sick children.



**Ms. Iris Wong, Executive Director of RMHC Hong Kong** said, “RMHC Hong Kong has been working tirelessly over the past two decades to ignite hope for children and their families who are in need in Hong Kong by providing a ‘home away from home’. With the advancement of technology, we are now able to deliver ‘family-centered care’ and maintain their physical and mental health more effectively. We are grateful for the holistic support from HGC to our newly launched RMH in Kwun Tong, which greatly enhanced the network performance and operation efficiency of the House, while allowing RMH team to focus on taking care of every sick children and their families.”

**Ms. Rainbow Wong, Vice President – Corporate Business, HGC Global Communications** said, “As a leading ICT solution provider in Hong Kong, HGC is committed to fostering connections and communications with an array of innovative technologies, and we understand this is particularly important for sick children who spend most of the time in the RMH. We are delighted to be working with HPE Aruba Networking to build a full coverage network environment for the newly launched RMH in Kwun Tong. We look forward to further deepening our partnership with RMHC, to continue sending love to children and their families who are in need.

**Ms. Fiona Siu, Director and General Manager at HPE Aruba Networking Hong Kong and Macau** said, “We believe that technology holds the power to advance the way people live and work, and we are honoured to have been chosen by RMHC to help provide a better quality of life to the ill

children in their care. Together with HGC, we can show how the technology sector can make a positive impact on our local community.”

HGC is committed to fulfilling its responsibility to the community by supporting organizations and people in need with our advanced ICT solutions and technologies. HGC and RMHC are currently in discussion to explore the possibilities of more in-depth and diverse collaborations, including fundraising and volunteering activities, to benefit a wider group of families and children in Hong Kong.

-END-

### **About RMHC Hong Kong**

Ronald McDonald House is the core program of RMHC Hong Kong. The House in Shatin is the first House in Asia, providing “home-away-from-home” service. Established in 1996, RMHC Hong Kong is a Chapter 88, non-profit organization. For the last 27 years, RMHC Hong Kong has been committed to a “family-centered care” service model, providing temporary residence and psychosocial support to families with seriously ill children, sharing their stress and burden. While the ill children receive medical treatment at a hospital nearby, parents can rest, cook, and find mutual support with other families.

The current Shatin House has 23 family suites, including one separate isolation suite for families with children receiving bone marrow transplants. Other facilities include a communal kitchen, laundry room, computer room, children’s playroom, an organic farm, etc. The House’s proximity to the hospital ensures that these young patients can receive immediate care should their condition become unstable. The service also benefits children who live in less-than-optimal conditions with high risk of bacterial infection. The House provides a comfortable and hygienic environment where they can rest until their conditions stabilize.

The new RMHC (Kwun Tong House) Jockey Club Building offers 66 rooms and an enhanced suite of service facilities to serve more children suffering from cancers, cardiovascular, kidney or rare diseases. In addition, more activity rooms and multi-function rooms are available to open up more collaborative opportunities with other social welfare organizations so as to further promote the “family-centered care” concept in supporting families of ill children. To the parents of ill children, the House provides a safe platform for seeking mutual support and encouragement from other parents in similar situations and finding relief from their burdens and struggles. Most children residing here are either seriously ill, traumatized or have undergone serious large-scale surgeries, including patients of leukemia, brain tumors, burns, lymphoma and bone marrow transplants.

### **About HGC Global Communications Limited**

HGC Global Communications Limited (HGC) is a leading Hong Kong and international telecom operator and ICT solution provider. The company owns an extensive network and infrastructure in Hong Kong and overseas and provides various kinds of services. HGC has 19 overseas offices and staff presence in 31 cities worldwide. It provides telecom infrastructure service to other operators and serves as a service provider to corporate and households. The company provides full-fledged telecom, data centre services, ICT solutions and broadband services for local, overseas, corporate, SME and mass markets. HGC owns and operates an extensive fibre-optic network, five cross-border telecom routes integrated into tier-one telecom operators in mainland China and connects with hundreds of world-class international telecom operators. HGC is one of Hong Kong's largest Wi-Fi service providers, running over 29,000 Wi-Fi hotspots in Hong Kong. The company is committed to further investing and enriching its current infrastructure and, in parallel, adding on top the latest technologies and developing its infrastructure services and solutions. In 2019, HGC Group completed the acquisition of Macroview Telecom Limited (Macroview), a leading digital technology solution and managed services provider. The addition of Macroview further accelerates HGC Group's digital transformation path and positioning as a pioneering ICT and digital services leader. HGC is a portfolio company of I Squared Capital, an independent global infrastructure investment manager focusing on energy, utilities and transport in North America, Europe and selected fast-growing economies.

To learn more, please visit HGC's website at: [www.hgc.com.hk](http://www.hgc.com.hk)

### **Media contacts**

Bryan Leung / Maggie Au

FleishmanHillard Hong Kong

Tel : (852) 6156 9672 / (852) 9871 8770

Email : [bryan.leung@fleishman.com](mailto:bryan.leung@fleishman.com) / [maggie.au@fleishman.com](mailto:maggie.au@fleishman.com)