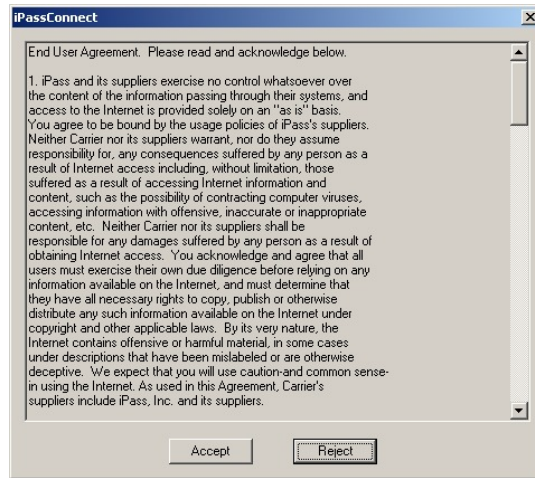
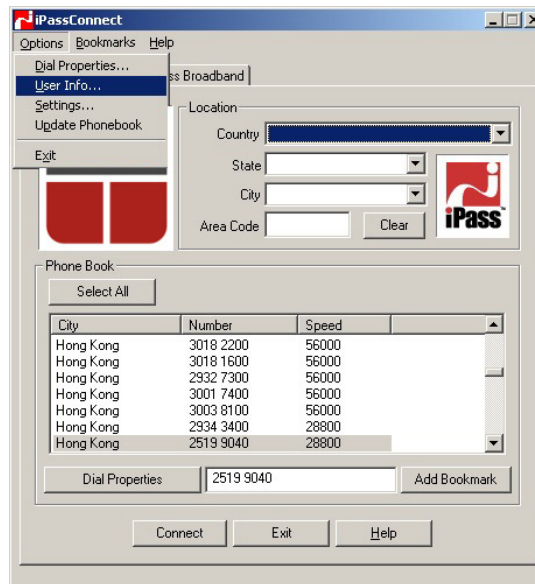


iPass Connect Quick Installation Guide

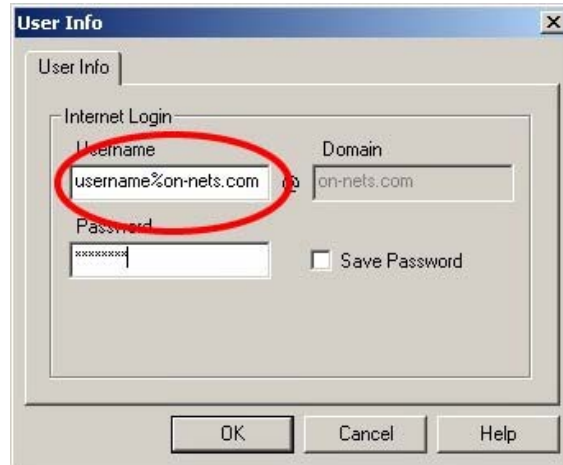
1. Download and install the iPassConnect Connection Kit



2. Accept the User Agreement and run the program.



3. Select "Options" and choose "User Info", enter your iPass Username and Password. Username in iPassConnect is your e-mail address with the '@' change to '%'. For example: your e-mail address is 'username@on-nets.com', your user login name in iPassConnect will be 'username%on-nets.com'. Password is the same as your e-mail account password.



4. Select a local number and test the connection

