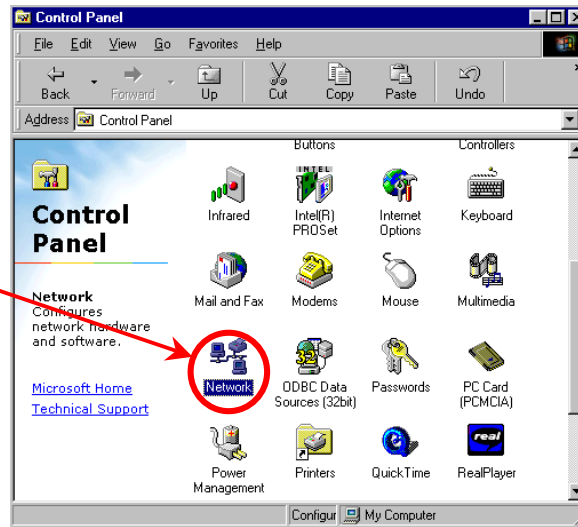


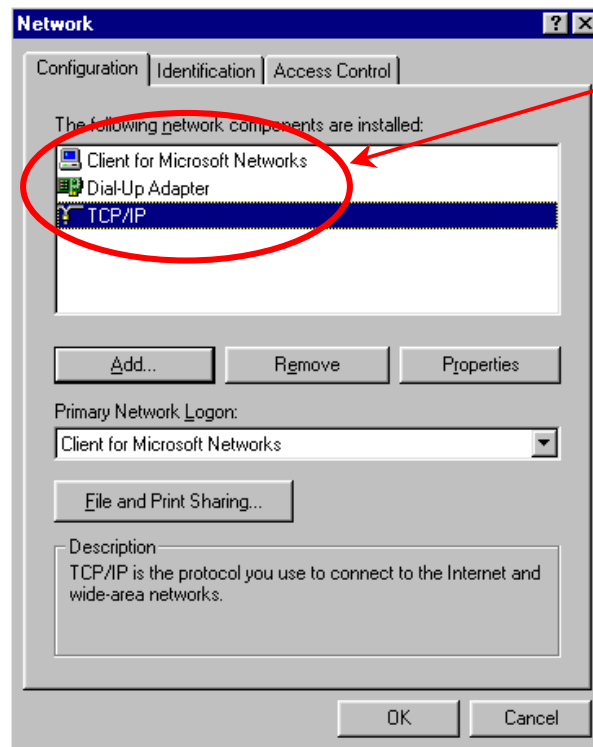


3. Double-click “Network”.

Double-click “Network”.



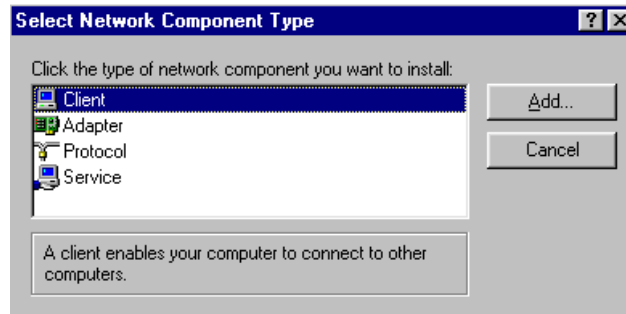
4. HGC Dial-up Service is required “Client for Microsoft Networks”, “Dial-Up Adapter” & “TCP/IP” to connect.



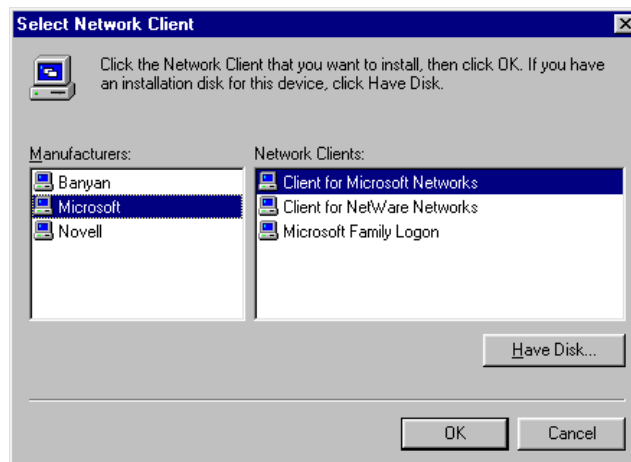
If either one of components does not exit, please go the following step to install.

1. Client for Microsoft Networks (go to Step 1a).
2. Dial-Up Adapter (go to Step 2a).
3. TCP/IP (go to Step 3a).

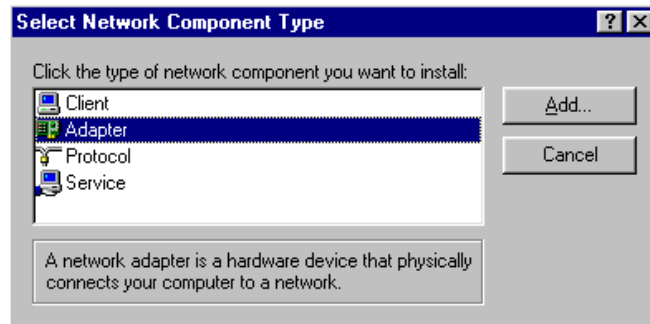
1a. Choose “Client” then click “add”.



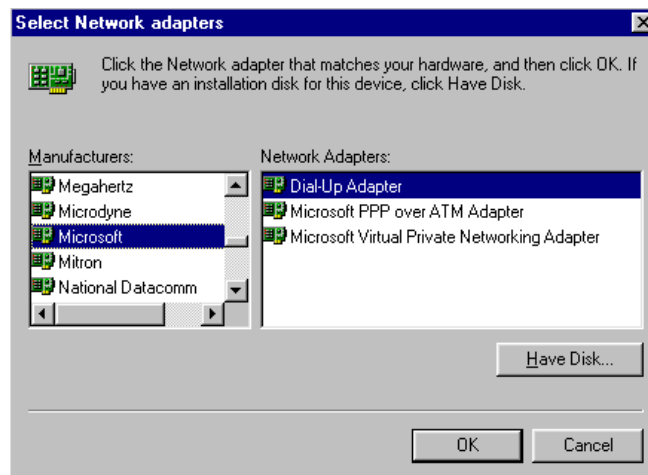
1b. Choose “Microsoft” under Manufacturers and “Client for Microsoft Networks” under Network Clients. Then Click “OK”.



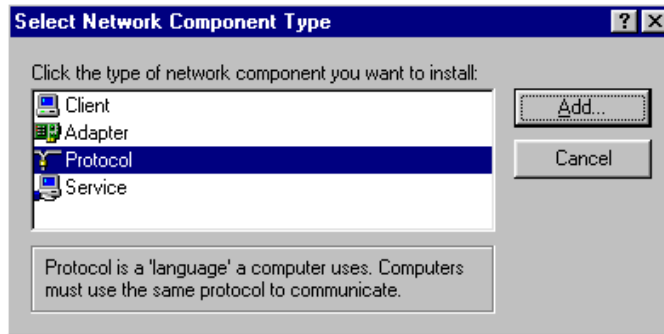
2a. Choose “Client” then click “add”.



2b. Choose “Microsoft” under Manufacturers and “Dial-Up Adapter” under Network Adapters. Then click “OK”.



3a. Choose “Protocol” then click “add”.



3b. Choose “Microsoft” under Manufacturers and “TCP/IP” under Network Protocols. Then Click “OK”.

